



RASSF4 Polyclonal Antibody

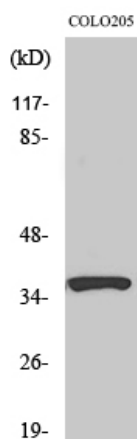
Catalog No	YP-Ab-16230
Isotype	IgG
Reactivity	Human;Rat
Applications	WB;ELISA
Gene Name	RASSF4
Protein Name	Ras association domain-containing protein 4
Immunogen	The antiserum was produced against synthesized peptide derived from human RASSF4. AA range:134-183
Specificity	RASSF4 Polyclonal Antibody detects endogenous levels of RASSF4 protein.
Formulation	Liquid in PBS containing 50% glycerol, 0.5% BSA and 0.02% sodium azide.
Source	Polyclonal, Rabbit,IgG
Purification	The antibody was affinity-purified from rabbit antiserum by affinity-chromatography using epitope-specific immunogen.
Dilution	Western Blot: 1/500 - 1/2000. ELISA: 1/10000. Not yet tested in other applications.
Concentration	1 mg/ml
Purity	≥90%
Storage Stability	-20°C/1 year
Synonyms	RASSF4; AD037; Ras association domain-containing protein 4
Observed Band	37kD
Cell Pathway	
Tissue Specificity	Widely expressed. Frequently down-regulated in tumor cell lines.
Function	function:Potential tumor suppressor. May act as a KRAS effector protein. May promote apoptosis and cell cycle arrest.,similarity:Contains 1 Ras-associating domain.,similarity:Contains 1 SARAH domain.,subunit:Interacts directly with activated KRAS in a GTP-dependent manner.,tissue specificity:Widely expressed. Frequently down-regulated in tumor cell lines.,
Background	The function of this gene has not yet been determined but may involve a role in tumor suppression. Alternative splicing of this gene results in several transcript variants; however, most of the variants have not been fully described. [provided by RefSeq, Jul 2008],
matters needing attention	Avoid repeated freezing and thawing!



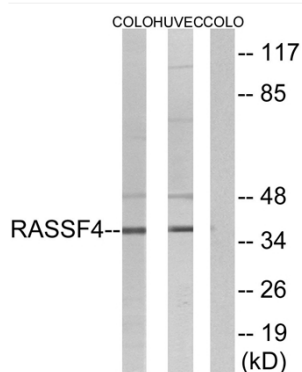
Usage suggestions

This product can be used in immunological reaction related experiments. For more information, please consult technical personnel.

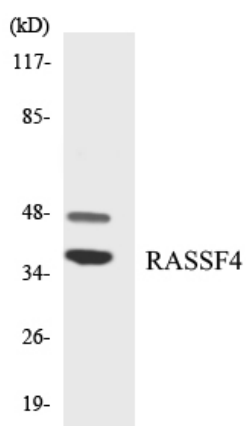
Products Images



Western Blot analysis of various cells using RASSF4 Polyclonal Antibody



Western blot analysis of lysates from COLO and HUVEC cells, using RASSF4 Antibody. The lane on the right is blocked with the synthesized peptide.



Western blot analysis of the lysates from RAW264.7 cells using RASSF4 antibody.